

ELECTRICAL LOAD CALCULATIONS

PANEL : A

200	AMP		240	VOLT / 120 VOLT, SINGLE PHASE, 3-WIRE		LOAD A		LOAD B		LOAD SERVED	
LOAD SERVED	LOAD A	LOAD B	BKTR TRIP	CKT NO	A	B	CKT NO	BKTR TRIP	LOAD A	LOAD B	LOAD SERVED
1 LIGHT	0.65	0.65	15/1	1			2	15/1	0.65	0.65	RECEPT (4x120)
2 LIGHTS (2x120) @ 1.25	1.56	1.56	15/1	2			4	15/1	1.56	1.56	
WATER HEATER (4000 @ 120)	33.3	33.3	25/2	5			6	66/2	33.3	33.3	HVAC
WATER HEATER (4000 @ 120)	33.3	33.3	25/2	7			8		33.3	33.3	
WATER HEATER (4000 @ 120)	33.3	33.3	25/2	9			10		33.3	33.3	
	0	0		11			12		0	0	
	0	0		13			14		0	0	
	0	0		15			16		0	0	
	0	0		17			18		0	0	
	0	0		19			20		0	0	
	0	0		21			22		0	0	
	0	0		23			24		0	0	
	0	0		25			26		0	0	
	0	0		27			28		0	0	
	0	0		29			30		0	0	
	0	0		31			32		0	0	
TOTAL	67.6	67.6							67.6	67.6	TOTAL
TOTAL CONNECTED LOAD	135.2		LOAD A	135.2		LOAD B	135.2				
ADDITIONAL LOAD FOR MIN. NEC LIGHTING	0				0		WATTS				
ADDITIONAL LOAD FOR SERVICE EQUIPMENT	0				0		WATTS				
TOTAL CALCULATED LOAD	135.2				135.2		WATTS		99		AMPS

WIRING SIZES

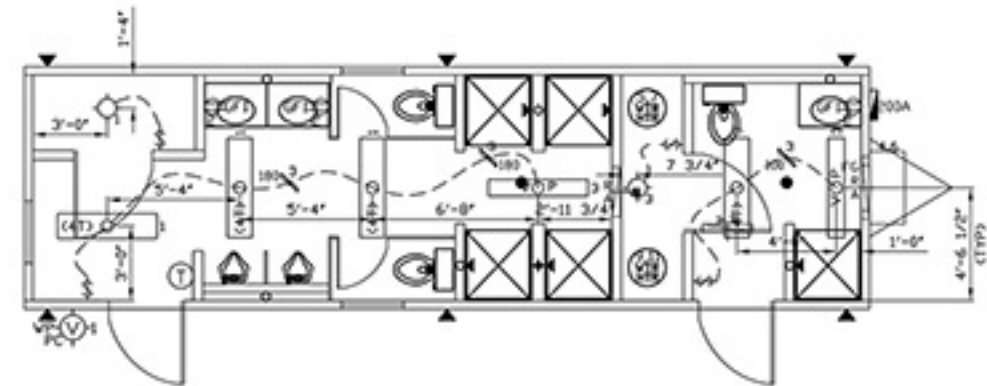
15 AMP CIRCUITS	#14 COPPER**
20 AMP CIRCUITS	#12 COPPER**
25 AMP CIRCUITS	#10 COPPER**
30 AMP CIRCUITS	#10 COPPER**
40 AMP CIRCUITS	#8 COPPER** OR **
45 AMP CIRCUITS	#6 COPPER**
45 AMP CIRCUITS	#8 COPPER**
50 AMP CIRCUITS	#8 COPPER**
50 AMP CIRCUITS	#6 COPPER**
60 AMP CIRCUITS	#6 COPPER** OR **
90 AMP CIRCUITS	#4 COPPER**
90 AMP CIRCUITS	#6 COPPER**
100 AMP CIRCUITS	#2 COPPER**
100 AMP CIRCUITS	#1 COPPER**

* 75°C MIN. TEMPERATURE RATING WITH EQUIPMENT TERMINATIONS LISTED AND IDENTIFIED FOR 75°C TYPE THW, THWN, THHN WIRE OR MC CABLE.
 ** TYPE NM OR SE CABLE (FROM 60" COLUMN TABLE 310-16).

LOAD CENTER
 MARKED AS APPROVED FOR USE AS SERVICE EQUIPMENT.
 ELECTRICAL PVC w/ SEPARATE GROUND OR EMT CONDUIT STUBBED THRU FLOOR (SEE CHART FOR CONDUIT & CONDUCTOR SIZES)
 SERVICE AT SITE BY SITE CONTRACTOR.
 GROUNDING ELECTRODE IN ACCORDANCE WITH NEC ARTICLE 258 (SEE CHART FOR WIRE SIZES)

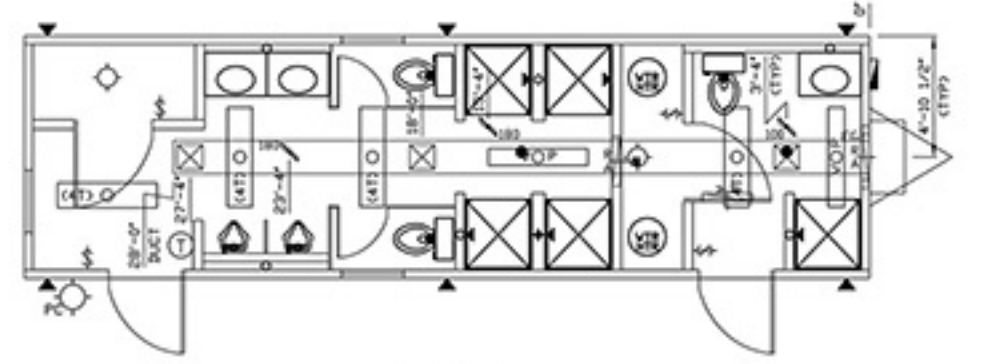
CONDUIT & CONDUCTOR CHART

AMP CIRCUIT	CONDUIT SIZE (INCH)	CONDUCTOR SIZE (AWG)	CONDUCTOR TYPE	CONDUCTOR COLOR
15 AMP, 1 PHASE	1/2"	#14	THW	BL
15 AMP, 1 PHASE	1/2"	#14	THWN	BL
15 AMP, 1 PHASE	1/2"	#14	THHN	BL
15 AMP, 1 PHASE	1/2"	#14	THWN-2	BL
15 AMP, 1 PHASE	1/2"	#14	THHN-2	BL
15 AMP, 1 PHASE	1/2"	#14	THWN-3	BL
15 AMP, 1 PHASE	1/2"	#14	THHN-3	BL
15 AMP, 1 PHASE	1/2"	#14	THWN-4	BL
15 AMP, 1 PHASE	1/2"	#14	THHN-4	BL
15 AMP, 1 PHASE	1/2"	#14	THWN-5	BL
15 AMP, 1 PHASE	1/2"	#14	THHN-5	BL
15 AMP, 1 PHASE	1/2"	#14	THWN-6	BL
15 AMP, 1 PHASE	1/2"	#14	THHN-6	BL
15 AMP, 1 PHASE	1/2"	#14	THWN-7	BL
15 AMP, 1 PHASE	1/2"	#14	THHN-7	BL
15 AMP, 1 PHASE	1/2"	#14	THWN-8	BL
15 AMP, 1 PHASE	1/2"	#14	THHN-8	BL
15 AMP, 1 PHASE	1/2"	#14	THWN-9	BL
15 AMP, 1 PHASE	1/2"	#14	THHN-9	BL
15 AMP, 1 PHASE	1/2"	#14	THWN-10	BL
15 AMP, 1 PHASE	1/2"	#14	THHN-10	BL
15 AMP, 1 PHASE	1/2"	#14	THWN-11	BL
15 AMP, 1 PHASE	1/2"	#14	THHN-11	BL
15 AMP, 1 PHASE	1/2"	#14	THWN-12	BL
15 AMP, 1 PHASE	1/2"	#14	THHN-12	BL
15 AMP, 1 PHASE	1/2"	#14	THWN-13	BL
15 AMP, 1 PHASE	1/2"	#14	THHN-13	BL
15 AMP, 1 PHASE	1/2"	#14	THWN-14	BL
15 AMP, 1 PHASE	1/2"	#14	THHN-14	BL
15 AMP, 1 PHASE	1/2"	#14	THWN-15	BL
15 AMP, 1 PHASE	1/2"	#14	THHN-15	BL
15 AMP, 1 PHASE	1/2"	#14	THWN-16	BL
15 AMP, 1 PHASE	1/2"	#14	THHN-16	BL
15 AMP, 1 PHASE	1/2"	#14	THWN-17	BL
15 AMP, 1 PHASE	1/2"	#14	THHN-17	BL
15 AMP, 1 PHASE	1/2"	#14	THWN-18	BL
15 AMP, 1 PHASE	1/2"	#14	THHN-18	BL
15 AMP, 1 PHASE	1/2"	#14	THWN-19	BL
15 AMP, 1 PHASE	1/2"	#14	THHN-19	BL
15 AMP, 1 PHASE	1/2"	#14	THWN-20	BL
15 AMP, 1 PHASE	1/2"	#14	THHN-20	BL
15 AMP, 1 PHASE	1/2"	#14	THWN-21	BL
15 AMP, 1 PHASE	1/2"	#14	THHN-21	BL
15 AMP, 1 PHASE	1/2"	#14	THWN-22	BL
15 AMP, 1 PHASE	1/2"	#14	THHN-22	BL
15 AMP, 1 PHASE	1/2"	#14	THWN-23	BL
15 AMP, 1 PHASE	1/2"	#14	THHN-23	BL
15 AMP, 1 PHASE	1/2"	#14	THWN-24	BL
15 AMP, 1 PHASE	1/2"	#14	THHN-24	BL
15 AMP, 1 PHASE	1/2"	#14	THWN-25	BL
15 AMP, 1 PHASE	1/2"	#14	THHN-25	BL
15 AMP, 1 PHASE	1/2"	#14	THWN-26	BL
15 AMP, 1 PHASE	1/2"	#14	THHN-26	BL
15 AMP, 1 PHASE	1/2"	#14	THWN-27	BL
15 AMP, 1 PHASE	1/2"	#14	THHN-27	BL
15 AMP, 1 PHASE	1/2"	#14	THWN-28	BL
15 AMP, 1 PHASE	1/2"	#14	THHN-28	BL
15 AMP, 1 PHASE	1/2"	#14	THWN-29	BL
15 AMP, 1 PHASE	1/2"	#14	THHN-29	BL
15 AMP, 1 PHASE	1/2"	#14	THWN-30	BL
15 AMP, 1 PHASE	1/2"	#14	THHN-30	BL



ELECTRICAL PLAN

NOTES
 1. DEVICE HEIGHTS: SWITCH HEIGHTS ARE NOTED FROM FINISHED FLOOR TO BOTTOM OF BOX (UNLESS NOTED), RECEPT HEIGHTS ARE NOTED FROM FINISHED FLOOR TO CENTER OF BOX (UNLESS NOTED) & JUNCTION BOX AND OTHER DEVICE HEIGHTS ARE NOTED FROM FINISHED FLOOR TO BOTTOM OF BOX (UNLESS NOTED).



HVAC PLAN

SYMBOL	DESCRIPTION
▽	TIE DOWN, WALL TYPE
⊙	WATER HEATER
⊙	FLOOR DRAIN LOCATION
⊙	WATER INLET LOCATION
⊙	MAIN DRAIN LOCATION
⊙	PLUMBING VENT THRU ROOF
⊙	THERMOSTAT, 42" AFF.
⊙	CEILING EXHAUST FAN (CFM AS NOTED)
⊙	8"x8" CEILING SUPPLY AIR DIFFUSER
⊙	15 AMP. SWITCH
⊙	42" AFF (UNLESS NOTED)
⊙	15 AMP. DUPLEX GFI RECEPT
⊙	42" AFF (UNLESS NOTED)
⊙	VANDAL RESISTANT EXT. INCANDESCENT LIGHT w/ PHOTO CELL, VP, 80" AFF.
⊙	CEILING MOUNTED INCANDESCENT LIGHT
⊙	4" DOUBLE TUBE SURFACE MOUNTED FLOOR VAPOR PROOF LIGHT w/ DIFFUSER
⊙	4" (4) TUBE SURFACE MOUNTED FLUORESCENT LIGHT w/ DIFFUSER
⊙	LOAD CENTER

DRAWING LEGEND

ALL ITEMS THAT ARE CLOUDED ARE FIELD INSTALLED

REV	DESCRIPTION	DATE	BY

DEAR JOHN TRAILER SALES
 PROJECT NAME: 1038R/SHOWER
 PLANT LOCATION: BRISTOL, IN

MODEL: 1038
 DATE: 10/20/10
 DRAWN BY: AM
 DRAWING SCALE: 1/4"=1'-0"
 QUOTE NO.: QTE00008291-A
 SERIAL NO.: IN-037545
 DRAWING NUMBER: EH1