

Module: A Area served 128 ft Panel Voltage 240
 Main Breaker 60A Panel Phase 1

CKT#	Breaker size	Description	QTY	Voltage	Wattage per item	Connected Load	Load Factor	Calculated load	Total
1	20/1	8,000 BTU AC	1	120	940	940	1.00	940	940
2	20/1	Baseboard Heater	2	120	1000	2000	1.25	2500	2500
3	15/1	Lights (2-tube)	3	120	67.2	201.6	1.25	252	252
4	15/1	Recepts	5	120	180	900	1.00	900	900

Total connected load	4592.00
Actual light load	252.00
TCL - ACL	4340.00
NEC LT load factor	3.5
Total Load	4900.00
Panel load amps	20.42

Wire Size Chart

Breaker Size	Wire Size	Breaker Size	Wire Size
15A	#14	80A	#4
20A	#12	90A	#3
30A	#10	100A	#3
40A	#8	115A	#2
50A	#8	130A	#1
60A	#6	150A	1/0

DRAWING LEGEND

SYMBOL	QTY.	DESCRIPTION
	2	Over the Floor hurricane straps/Tie down locations
	1	120/240 electric panel
	2	120V Electric 48" baseboard heater (+4" A.F.F.)
	1	Thermostat (+54" A.F.F.)
	5	120V ivory duplex grounding type (+18" AFF unless noted)
	1	120V ivory single A/C Recept (+54" AFF)
	2	2x4-jbox w/3/4" conduit thru floor for phone/data (+36" AFF unless noted)
	1	120V ivory toggle type (+48" AFF unless noted)
	3	120V 4' (2) tube surface mount w/diffuser

DOOR & WINDOW SCHEDULE

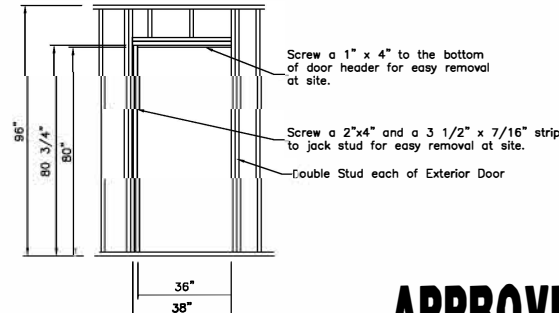
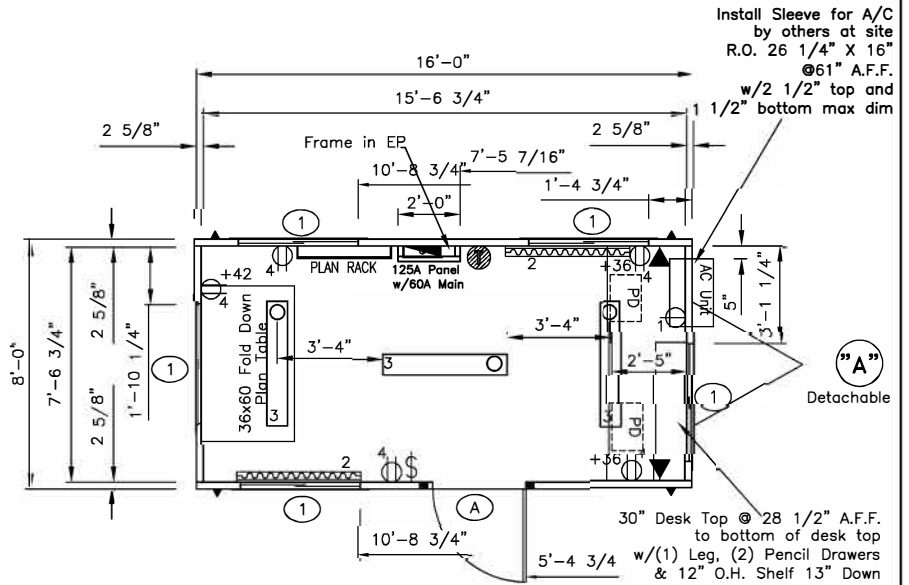
SYMBOL	QTY.	DESCRIPTION	ROUGH OPENING
(A)	1	36x80 standard vinyl clad door w/alum. frame and 10x10 safety glazed lite stay chain, knob lock set, weatherstripping, minigutter and threshold	36 x 80 see R.O. Detail
(1)	5	46x27 horizontal slider w/aluminum mill frame single glass, blinds and bug screen	46 1/4" x 27 1/4" up 41 1/4" A.F.F.

Electrical Riser Diagram

NTS

PNL A

A 120/240v 1PH 60HZ PANEL
 60A 2-pole breaker
 1 1/2" EMT conduit
 (3) #1 THW feeders
 #6 GRND



Framing for Exterior Door "A"

APPROVED FOR PRODUCTION

Dear John® Inc.

ID	Revision	Date
Scale: 1/4" = 1'-0"	Drawn: BB	Date: 2/20/08
Serial Numbers:	Drawing Number: 825	DWG File Name: DJTB20F0.dwg
Approval Numbers:		
Dear John Trailers 8 x 20 Office (8'-0" x 16'-0")		
Sheet Description: Production Floor /Electrical Plan		Page #: A2