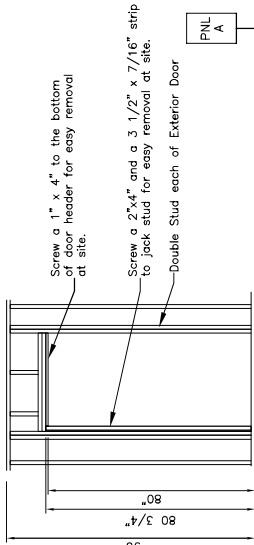


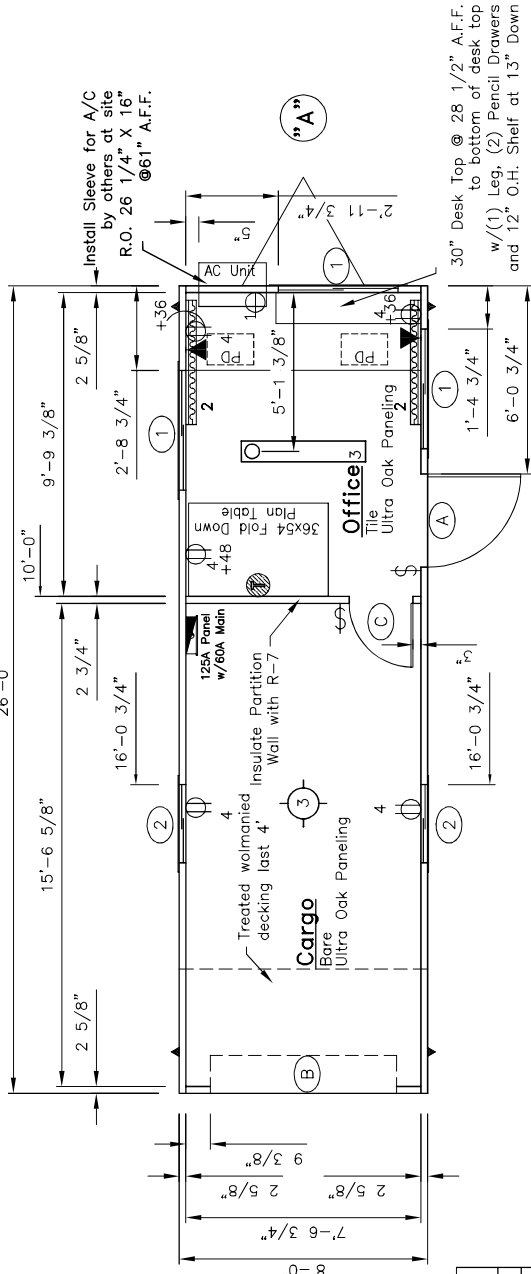
APPROVED FOR PRODUCTION



Framing for Exterior Door "A"

- A 120/240V, 1PH, 60HZ PANEL
- 60A 2-pole breaker
- 1 1/2" EMI conduit
- (3) #6 THW feeders
- #8 GRND

Electrical Riser Diagram



SYMBOL	QTY.	DESCRIPTION
▲	2	Over the Floor hurricane straps/Tie down locations
▬	1	120/240 electric panel
⊕	2	120V Electric 48" baseboard heater (+4" A.F.F.)
⊖	1	Thermostat (+54" A.F.F.)
⊕	5	120V ivory duplex grounding type (+18" AFF unless noted)
⊖	1	120V ivory single A/C Recept (+54" AFF)
◀	2	2x4-jbox w/3/4" conduit thru floor for phone/data (+36" AFF unless noted)
⊕	2	120V ivory toggle type (+48" AFF unless noted)
□	1	120V 4' (2) tube surface mount w/diffuser
○	1	120V Porcelain base incandescent light

Module:	A	Area served	256 ft	Panel Voltage	240
CTK#	1	20/1 AC	940	Connected Load	940
2	20/1 Baseboard Heater	2000	1.00	Calculated Load	2000
3	15/1 Lights	84	1.25	Total	2000
4	15/1 Recepts	60	1.25		186
			1.00		900
				Total connected load	4020.00
				Actual light load	105.00
				TCL - ACL	3915.00
				NEC LT load factor	1120.00
				Total Load	5035.00
				Panel load amps	20.98

Wire Size Chart

Breaker Size	Wire Size	Breaker Size	Wire Size
15A	#14	80A	#4
20A	#12	90A	#3
30A	#10	100A	#3
40A	#8	115A	#2
50A	#8	130A	#1
60A	#6	150A	1/0

DOOR & WINDOW SCHEDULE

SYMBOL	QTY.	DESCRIPTION	ROUGH OPENING
A	2	36x80 standard vinyl clad door w/alum. frame and 10x10 safety glazed lite stay chain, knob lock set, weatherstripping, minigutter and threshold	36 x 80 see R.O. Detail
B	1	72 X 68 Steel roll-up overhead w/minigutter	72 x 68 1/2
C	1	24x80 hollow core door w/factory frame and passage knob set	24 5/8 x 81 5/8
1	3	30x27 horizontal slider w/aluminum mill frame single glass, blinds and bug screen	30 1/4" x 27 1/4" up 41 1/4" A.F.F.
2	2	30x14 horizontal slider w/aluminum mill frame single obscure glass and bug screen	30 1/4" x 14 1/4" up 54 1/4" A.F.F.

Dear John Inc.
 2224 Bloomingdale Drive
 Bristol, Indiana 46507
 PH: (574) 848-7300
 FX: (574) 848-1950

C & B
 MODULAR, INC.

ID	Revision	Date
Scale: 1/4" = 1'-0"	Drawn: BB	Date: 2/21/08
Serial Numbers:	DWG File Name: DJ1830C.dwg	Plot Date: Feb 28, 2008
Approval Numbers: MT 252784	Drawing Number: 827	
Title: Dear John Trailers		
8 x 30 Combo (8'-0" x 26'-0")		
Sheet Description: Production Floor / Electrical Plan		
		Page #: A2