

Module A	Area served	120 V	Panel Voltage	240					
	Main Breaker	60A	Panel Phase	1					
CK#	Breaker size	Description	QTY	Voltage	Wattage per item	Connected Load	Load Factor	Calculated load	Total
1	20/1	8,000 BTU AC	1	120	840	840	1.00	840	840
2	20/1	Baseboard Heater	3	120	1000	3000	1.25	2500	2500
3	15/1	Lights (4x60)	3	120	71.3	213.9	1.25	267	267
4	15/1	Recept	3	120	180	540	1.00	540	540
Total connected load						4607.00			
Actual light load						267.00			
TOL - ACI						4340.00			
NEC LF load factor						3.8		590.00	
Total Load						4930.00			
Panel load amps						20.42			

Wire Size Chart

Breaker Size	Wire Size	Breaker Size	Wire Size
15A	#14	60A	#2
20A	#12	80A	#2
30A	#10	100A	#1
40A	#8	115A	1/0
50A	#6	150A	2/0
60A	#4	150A	3/0

Wire Size Notes:

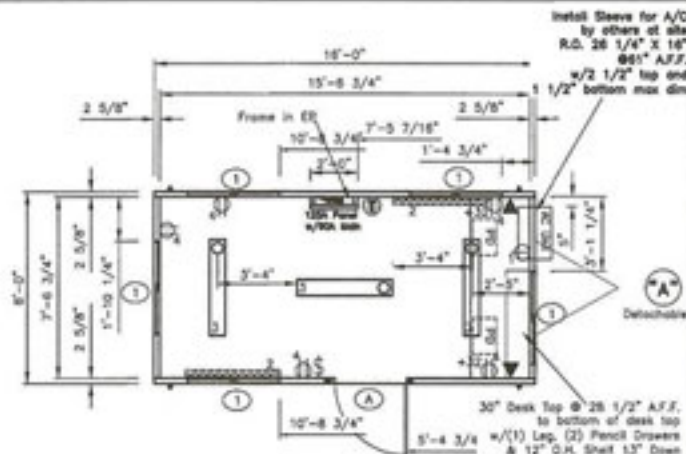
- Wiresizes to coordinate with equipment installation instructions and NEC

DRAWING LEGEND

SYMBOL	QTY.	DESCRIPTION
▶	2	Over the Floor hurricane straps/Tie down locations
Ⓜ	1	120/240 electric panel (+30" A.F.F.)
Ⓜ	2	120V Electric 48" baseboard heater (+4" A.F.F.)
Ⓜ	1	Thermostat (+54" A.F.F.)
Ⓜ	5	120V ivory duplex grounding type (+18" AFF unless noted)
Ⓜ	1	120V ivory single A/C Recept (+54" AFF)
◀	2	2x4-pole w/3/4" conduit thru floor for phone/data (+32" AFF unless noted)
Ⓜ	1	120V ivory toggle type (+42" AFF unless noted)
Ⓜ	3	120V 4" (2) tube surface mount w/offsetter

DOOR, WINDOW AND OPENING SCHEDULE

SYMBOL	QTY.	DESCRIPTION	ROUGH OPENING
A	1	36x80 Clear vinyl clad door w/10x10 sq-tilt lockers lead lock - 5411 Frame Alum, Over Stay Chain	36 x 80 See R.O. Detail
1	5	Window Frame Aluminum (360 Finish) Ins. Arg. Argon, 1" Minibulbs (Color - white)	46 1/4 x 27 1/4 w/ 41 1/4" A.F.F.



PH. A

A 120/240V 1PH 60HZ PANEL
60A 2-pole breaker

1 1/2" EMT conduit
(3) #1 THW feeders
#6 GROUND

Electrical Riser Diagram

