

Project Name: **DJT 824 Office** Building length: **8 ft** Unit Perimeter: **56 ft**
 Project SN: **Stock** Building width: **20 ft** Unit Area: **160 ft**
 Module: **A** Area served **160 ft** Panel Voltage **240**
 Main Breaker **60A** Panel Phase **1**

CKT#	Breaker size	Description	QTY	Voltage	Wattage per item	Connected Load	Load Factor	Calculated load	Total
1	20 A	8,000 BTU AC	1	120	940	940	1.00	940	940
2	20 A	Baseboard Heater	2	120	1000	2000	1.25	2500	2500
3	15 A	Lights (2-tube)	3	120	67.2	201.6	1.25	252	252
4	15 A	Recept	5	120	180	900	1.00	900	900
Total connected load								4692.00	
Actual light load								252.00	
TCL - ACL								4340.00	
NEC LT load factor							3.5	700.00	
Total Load								5040.00	
Panel load amps								21.00	

Wire Size Chart

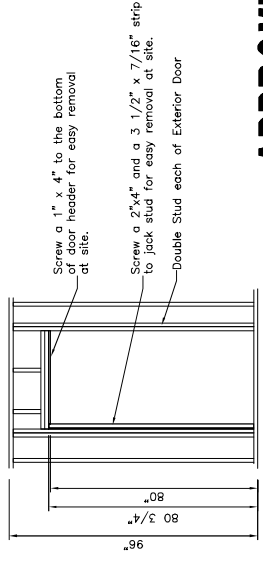
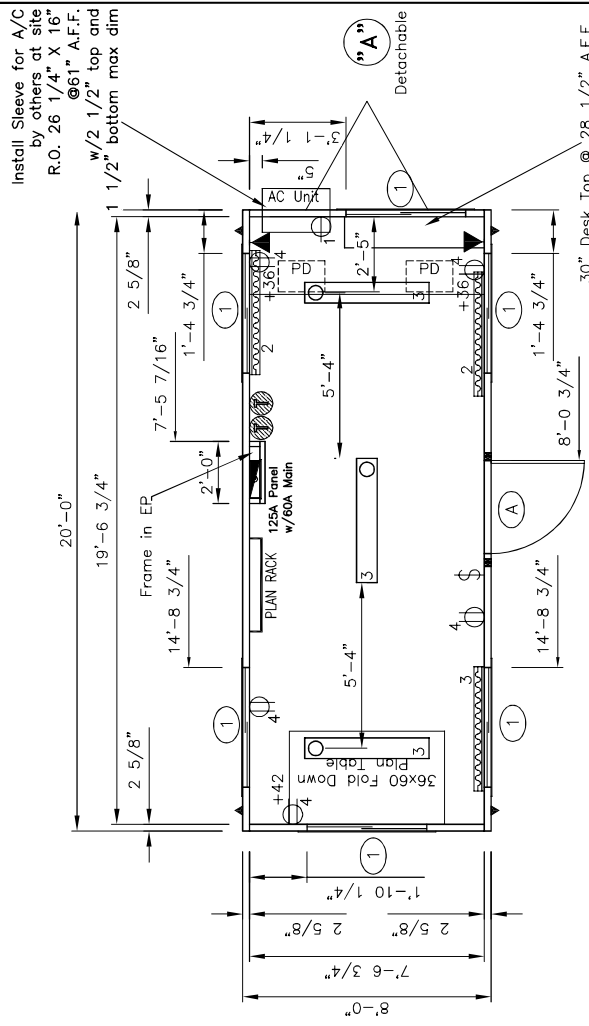
Breaker Size	Wire Size	Breaker Size	Wire Size
15A	#14	80A	#4
20A	#12	90A	#3
30A	#10	100A	#3
40A	#8	115A	#2
50A	#8	130A	#1
60A	#6	150A	1/0

DRAWING LEGEND

SYMBOL	QTY.	DESCRIPTION
▶	2	Over the floor hurricane straps/Tie down locations
▬	1	120V/240 electric panel
▬	3	120V Electric 48" baseboard heater (+4" A.F.F.)
⊕	2	Thermostat (+54" A.F.F.)
⊕	5	120V ivory duplex grounding type (+18" AFF unless noted)
⊕	1	120V ivory single A/C Recept (+54" AFF)
◀	2	2x4-box w/3/4" conduit thru floor for phone/data (+36" AFF unless noted)
⊕	1	120V ivory toggle type (+48" AFF unless noted)
⊕	3	120V 4' (2) tube surface mount w/diffuser

DOOR & WINDOW SCHEDULE

SYMBOL	QTY.	DESCRIPTION
⊕	1	36x80 standard vinyl clad door w/alum. frame and 10x10 safety glazed lite see R.O. Detail
⊕	6	46x27 horizontal slider w/aluminum mill frame single glass, blinds and bug screen



Framing for Exterior Door "A"

APPROVED FOR PRODUCTION

ID	Revision	Date

Scale: 1/4" = 1'-0" BB	Date: 2/20/08	Plot Date: Feb 26, 2008
Serial Numbers: 725	Drawing Number: 725	DWG File Name: DJT824F0.dwg
Approval Numbers: MT 252784	Title: Dear John Trailers	
8 x 24 Office (8'-0" x 20'-0")		
Sheet Description: Production Floor /Electrical Plan		
Page #:		A2

Dear John Inc.

2224 Bloomingdale Drive
 Bristol, Indiana 46507
 PH: (574) 848-7300
 FX: (574) 848-1950

C & B
 MODULAR, INC.