

Module: A Area served 128 ft Main Breaker 60A Panel Voltage 240 Panel Phase 1

| CKT#                 | Breaker size | Description      | QTY | Voltage | Wattage per item | Connected Load | Load Factor | Calculated load | Total   |
|----------------------|--------------|------------------|-----|---------|------------------|----------------|-------------|-----------------|---------|
| 1                    | 20/1         | 8,000 BTU AC     | 1   | 120     | 940              | 940            | 1.00        | 940             | 940     |
| 2                    | 20/1         | Baseboard Heater | 2   | 120     | 1000             | 2000           | 1.25        | 2500            | 2500    |
| 3                    | 15/1         | Lights (2-tube)  | 3   | 120     | 67.2             | 201.6          | 1.25        | 252             | 252     |
| 4                    | 15/1         | Receptis         | 5   | 120     | 180              | 900            | 1.00        | 900             | 900     |
| Total connected load |              |                  |     |         |                  |                |             |                 | 4592.00 |
| Actual light load    |              |                  |     |         |                  |                |             |                 | 252.00  |
| TCL - ACL            |              |                  |     |         |                  |                |             |                 | 4340.00 |
| NECLT load factor    |              |                  |     |         |                  |                |             |                 | 3.5     |
| Total Load           |              |                  |     |         |                  |                |             |                 | 5600.00 |
| Panel load amps      |              |                  |     |         |                  |                |             |                 | 20.42   |

**Wire Size Chart**

| Breaker Size | Wire Size | Breaker Size | Wire Size |
|--------------|-----------|--------------|-----------|
| 15A          | #14       | 80A          | #4        |
| 20A          | #12       | 90A          | #3        |
| 30A          | #10       | 100A         | #3        |
| 40A          | #8        | 115A         | #2        |
| 50A          | #8        | 130A         | #1        |
| 60A          | #6        | 150A         | 1/0       |

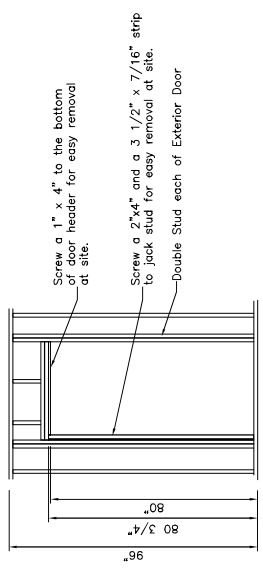
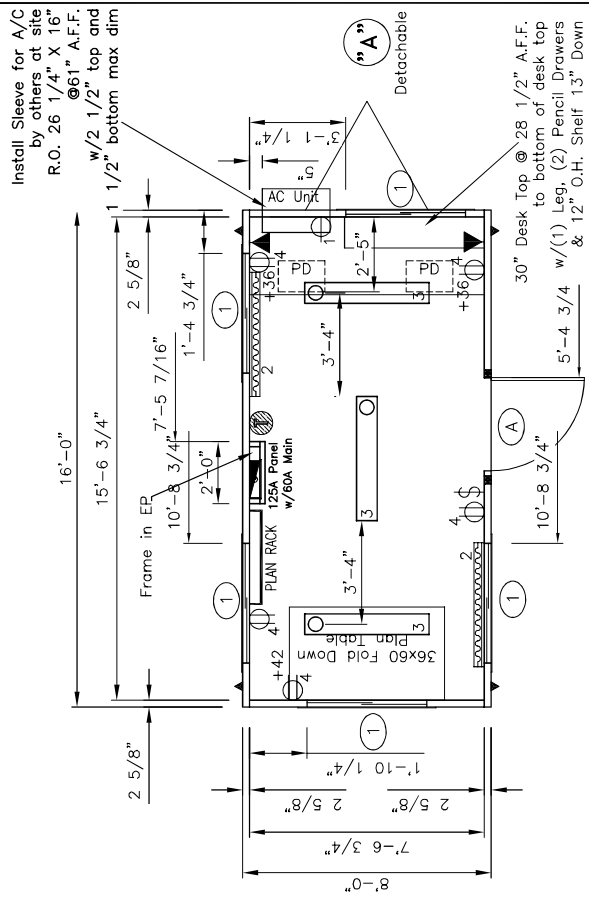
**DRAWING LEGEND**

| SYMBOL | QTY. | DESCRIPTION  |
|--------|------|--|
| ▶      | 2    | Over the Floor hurricane straps/Tie down locations                       |
| ▬      | 1    | 120V/240 electric panel  |
| ▬      | 2    | 120V Electric 48" baseboard heater (+4" A.F.F.)                          |
| ⊕      | 1    | Thermostat (+54" A.F.F.)   |
| ⊕      | 5    | 120V ivory duplex grounding type (+18" AFF unless noted)                 |
| ⊕      | 1    | 120V ivory single A/C Recept (+54" AFF)                                  |
| ◀      | 2    | 2x4-box w/3/4" conduit thru floor for phone/data (+36" AFF unless noted) |
| ⊕      | 1    | 120V ivory toggle type (+48" AFF unless noted)                           |
| ◻      | 3    | 120V 4' (2) tube surface mount w/diffuser                                |

**Electrical Riser Diagram**  
NTS

**DOOR & WINDOW SCHEDULE**

| SYMBOL | QTY. | DESCRIPTION   |
|--------|------|---|
| (A)    | 1    | 36x80 standard vinyl clad door w/alum. frame and 10x10 safety glazed lite stay chain, knob lock set, weatherstripping, minigutter and threshold see R.O. Detail |
| (1)    | 5    | 46x27 horizontal slider w/aluminum mill frame single glass, blinds and bug screen up 41 1/4" A.F.F.   |



**APPROVED FOR PRODUCTION**  
Framing for Exterior Door "A"

| ID | Revision | Date |
|----|----------|------|
|    |          |      |

|  |  |                             |
|--|--|-----------------------------|
| Scale: 1/4" = 1'-0" BB                               | Date: 2/20/08  | Plot Date: Feb 26, 2008     |
| Serial Numbers: 825                                  | Drawing Number: 825                                      | DWG File Name: DJ1820F0.dwg |
| Approval Numbers: MT 252784                          | Title: Dear John Trailers 8 x 20 Office (8'-0" x 16'-0") |                             |
| Sheet Description: Production Floor /Electrical Plan |  |                             |

**Dear John Inc.**  
2224 Bloomingdale Drive  
Bristol, Indiana 46507  
PH: (574) 848-7300  
FX: (574) 848-1950

**C & B**  
MODULAR, INC.

Page #: A2